



PLAT.ONE
ENTERPRISE-GRADE IOT

IoT and M2M Applications Cloud

May 21, 2015

ABOUT PLAT.ONE

PLAT.ONE produces the first Enterprise-Grade Applications Platform. We are headquartered in Palo Alto, USA, with a global commercial and development team.

Since 2011, we have been enabling telecom operators, system integrators and large corporations to seamlessly design, develop and deploy mission-critical M2M / IoT solutions.

**Machina
Research**

Gartner

**Beecham
Research**

ABIresearch
technology market intelligence

Harbor Research

Postscapes
Tracking the Internet of Things

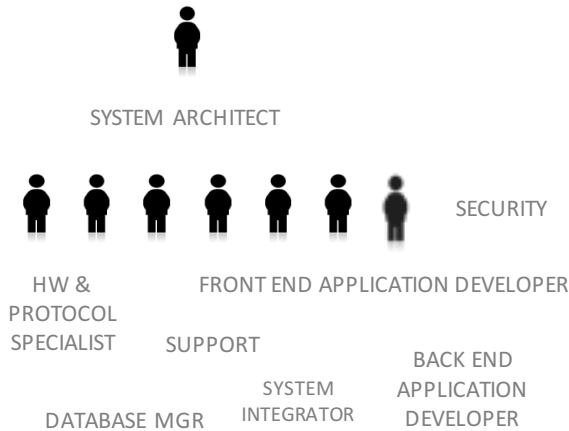
Cisco Entrepreneurs in Residence

KEY CLIENTS

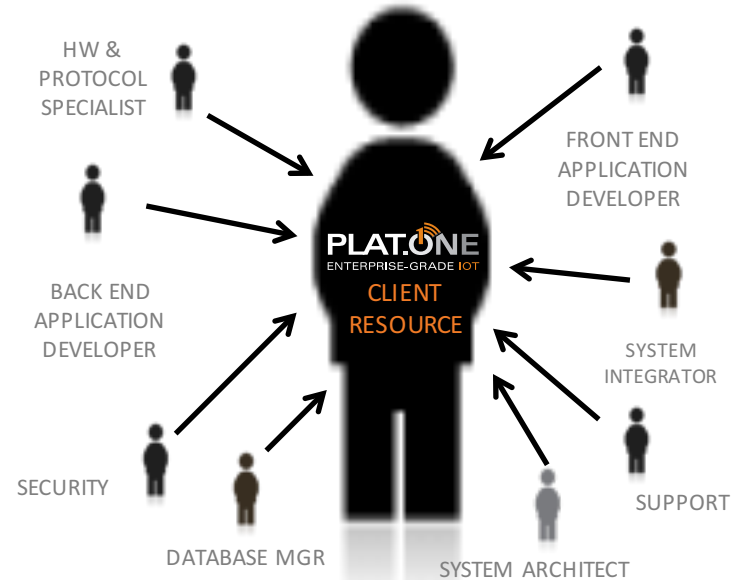
- 200,000+** devices under management
- 84** man years in development
- 25** industrial customers
- 3** major telecoms
- 1** Enterprise-Grade Application Platform



ACCELERATING TIME TO VALUE

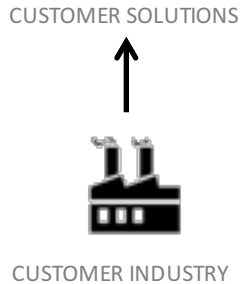


WITHOUT PLAT.ONE: Clients need a broad array of resources to execute. Resources must also be properly aligned within the organization.



WITH PLAT.ONE: Clients need far fewer and less specialized resources. PLAT.ONE magnifies the value of our client's resources. Organizational barriers are reduced or eliminated.

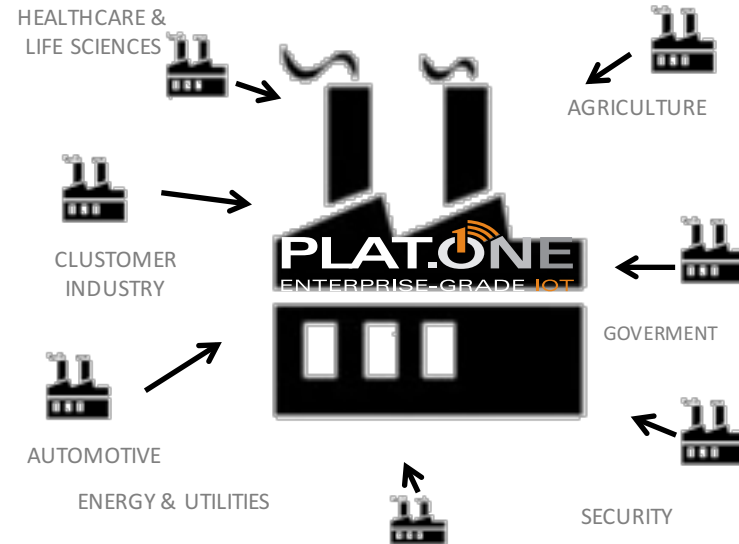
ENABLING FAST INNOVATION



Time to market: 9-18 months

WITHOUT PLAT.ONE: Clients develop solutions within the context of their respective industries.

CUSTOMER SOLUTIONS



Time to market: 4 months

WITH PLAT.ONE: Clients develop solutions leveraging our platform and eco-system effect across a wide array of industries around the world.

AN ENTERPRISE-GRADE APPLICATION PLATFORM

Rapidly Develop & Deploy Connected Applications

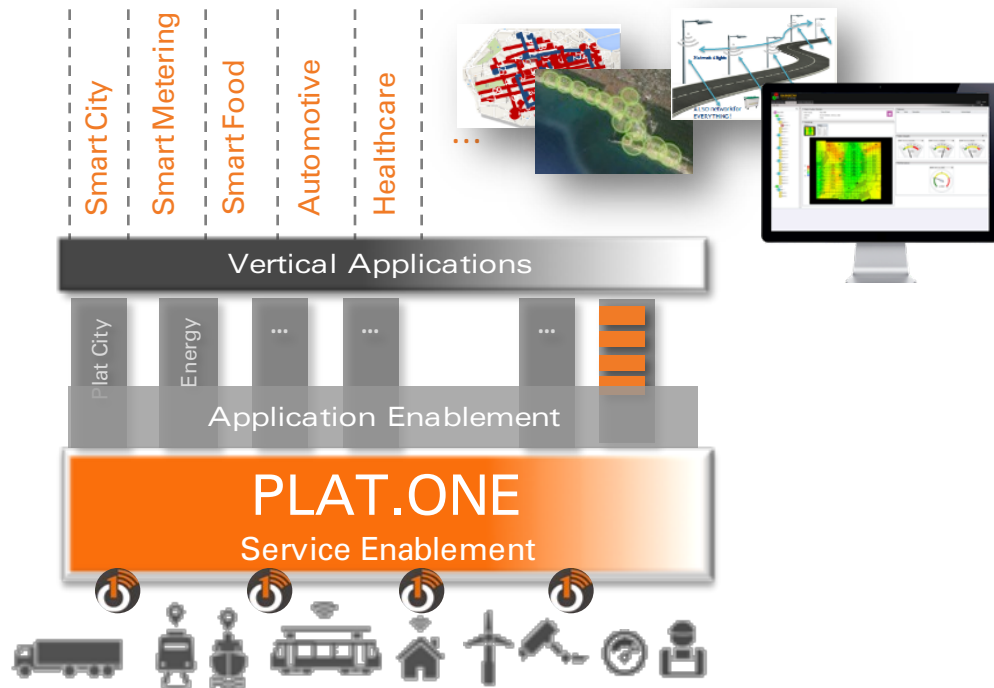
- 10x faster than custom development
- Requires limited technical skills
- Rapid deployment (cloud, on-premise)

Complete Enterprise-Grade Platform

- Scalable, Secure
- Distributed ('Fog Ready')
- Big-Data Ready

Broad Industry Use

- Extensible
- Standards-based (OSGi and OneM2M)
- Rapidly growing ecosystem



DEVICE AGNOSTIC



- Protocol translation (standards & common data formats)
- Device data repository
- Data Flow Control Policies
- Device Security
- Connectivity
- Device Identity Management
- Configuration & Resource Management
- KPI and QoS
- Troubleshooting
- OTAP

RICH PROTOCOLS SUPPORT

Protocol translation (standards & common data formats)

Device Protocols repository

Service Enablement & Device Management

Protocols

Zigbee
XBee
ZWave
6lowPAN
BT & BTLE
WiFi & LPWiFi
IEEE 802.15.4
MQTT
CoAP
TR069
SNMP
HART & W-HART
SIGFOX
Semtech LoRa
NWAVE UnB

OMG DDS
BACNET
LON
KNX
Modbus
Profibus
Infibus
DLMS/COSEM
KSAT (Viasat)
PLC(*)
OPC UA
OMA LWM2M
ETSI M2M v.1.1
Active Message
SWAP(*)
XMPP(*)

Vendors

Accent
Agora Energy
Agulla
AnyDATA
Arduino
Asoka
ATIM
Axible
AXIS
B&B Electronics
CloudGate
Connit
CPL
DiGi
Digicom

Distech Controls
E-Senza
Ekahau
Elster
EPISENSOR
Eurotech
Honeywell
Intenses
ITRON
Kamstrup
LIBELIUM
Marvell
MeterSit
MICRON
Mobile Devices

NaelBox
Netcomm Wireless
NETVOX
NWAVE
Packet Power
PARADOX
PIKKERTON
Pulsar
Radiocrafts
RaperryPI
Schneider Electric
Semtech LoRa
Sensinode
SIERRA WIRELESS
SIGFOX

SimpleHomeNet
SITEC
SmarteoWater
SMARTEX
ST Micro
Sterela
Telecom Design
TELIT
TekPea
TRIDIUM
VIASAT
WAGO
Wi-NEXT
Worldsensing
XIRGO

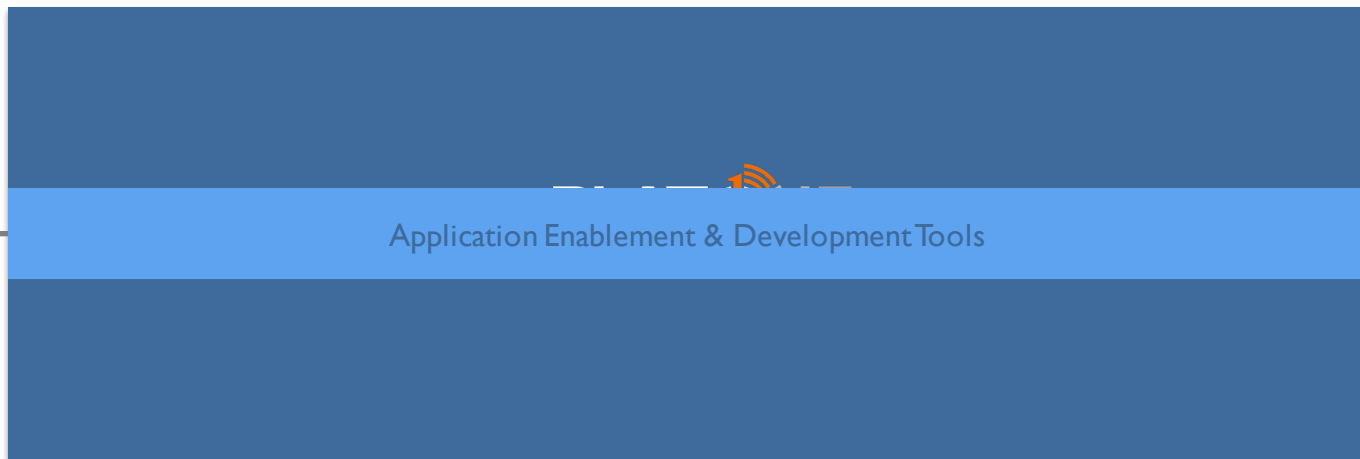
SEMANTIC DATA MODEL



- Data Abstraction
- Semantic Modelling
- Data Tagging & Tracking
- Data Filtering
- Data Brokerage

- Data Storage (RDBMS & NOSQL)
- Events Processing
- Continuous Queries
- Rules
- Alarms & Notifications

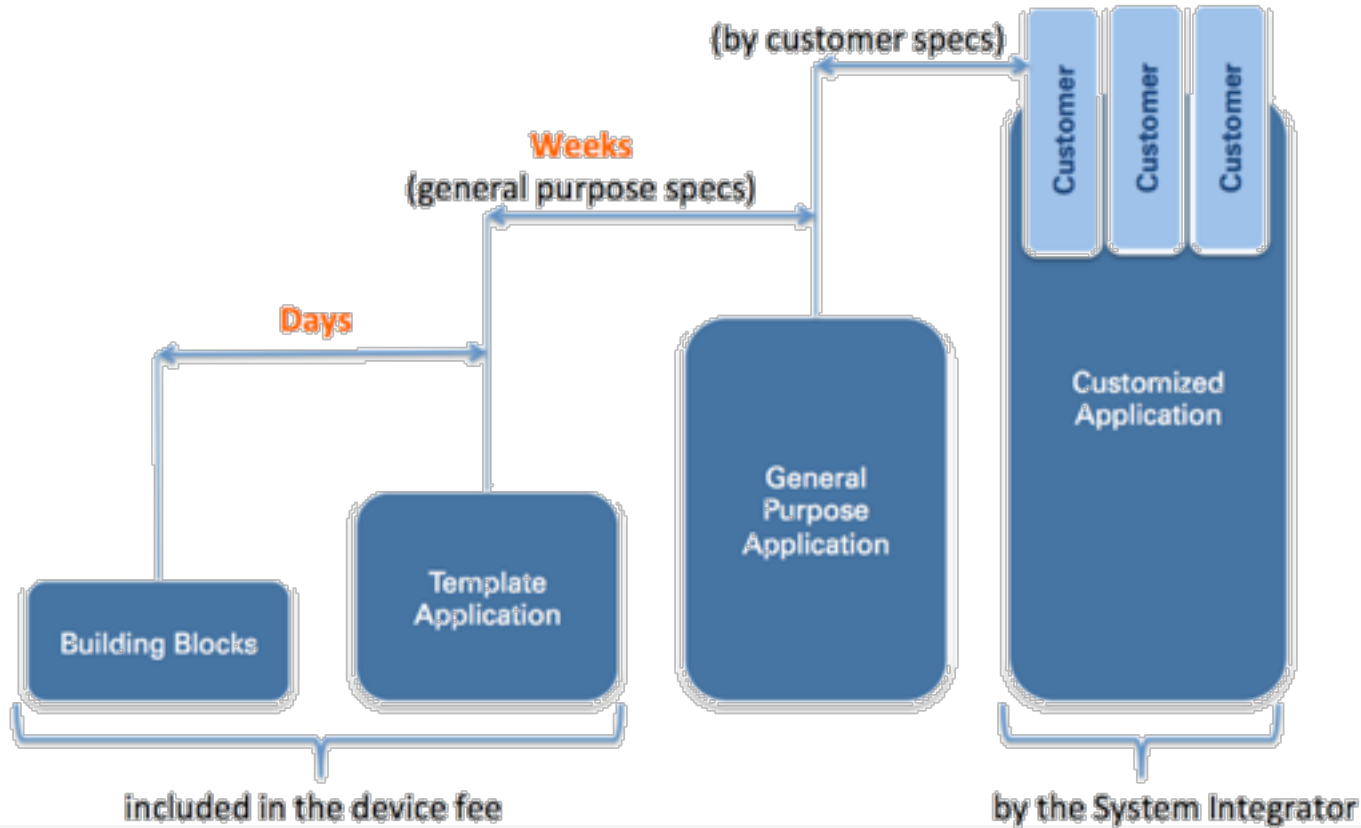
APPLICATION ENABLEMENT



- Multi-tenancy
- Data Integration
- Application Life Cycle
- Certificates Management
- Data Isolation

- Integration Adapters
- Application Builder
- Application Showcase
- API Hub
- Debugging & Troubleshooting

EASY APPLICATION DEVELOPMENT



DATA ANALYTICS



- Engine Integration (plugins)
- Application Analytics
- Device Analytics
- Complex Events Processing
- Continuous Queries
- Distributed Storage & Analytics
- Exporting
- Reporting
- BI Integration

DOMAIN SPECIFIC BUILDING BLOCKS



- Location-based services
- Energy services
- Tracking services
- Video Analytics
- ...

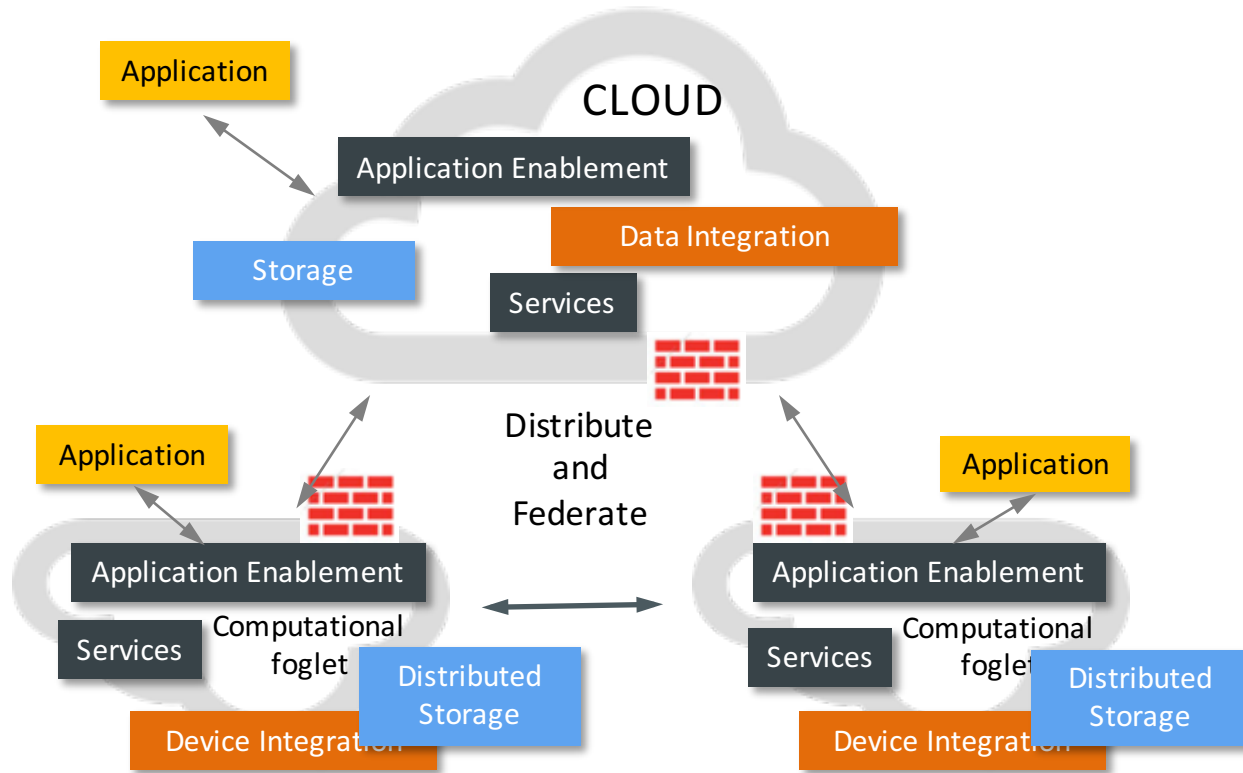


- Geo-fence definition
- Entity entering ...
- Entity exiting ...
- Time in geo-fence
- ...

A COMPLETE CITY PLATFORM



DISTRIBUTED ARCHITECTURE

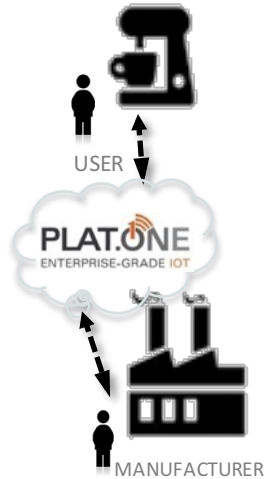


- Standards-Compliant
- Interoperable
- Service & Application Life Cycle Management
- Fog-Ready
- Distributed Edge Computing
- Federated Supervisory
- Agent Technology

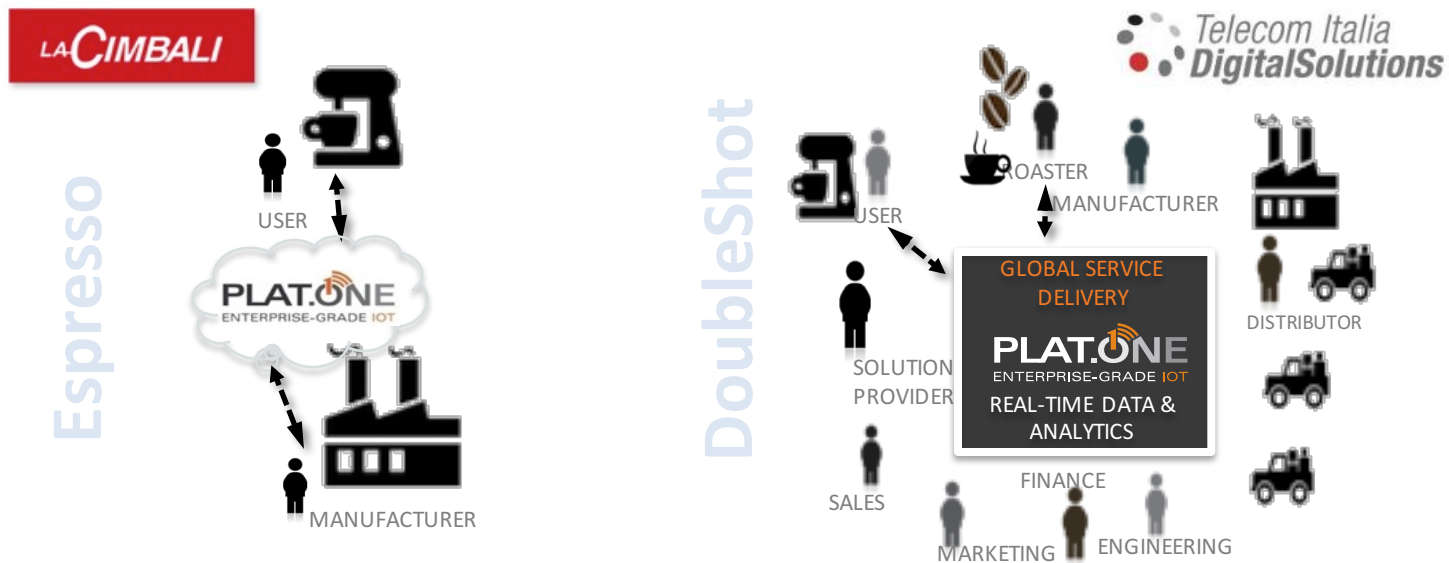
CONNECTED INDUSTRIES



Espresso



CONNECTED PRODUCTS



TODAY: PLAT.ONE is the hub to connect LaCimbali to remotely monitor, manage and monetize its industrial coffee machines.

TOMORROW: PLAT.ONE is the data hub to connect LaCimbali to all members of the coffee eco-system.

CONNECTED CITIES



PARKING & LIGHTING (SPAIN)

1,000 Light Poles
360 Parking Spaces

SECURITY & PARKING (FRANCE)

Video-Based
Saved 50% per space

SMART CITY NETWORK (GERMANY)

Smart lighting
Smart refuse
Transportation

TOURIST NETWORK (ITALY)

Citizen Wi-Fi
Cell Phone Tracking

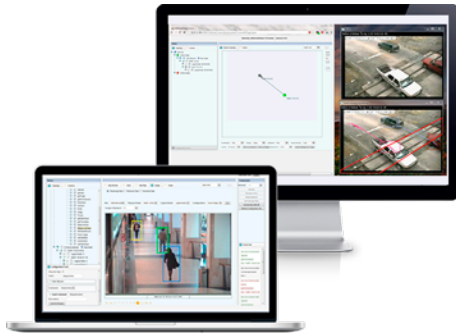
CONNECTED MANUFACTURING



- ✓ Full integration between legacy systems through OPC
- ✓ Industry protocols support (Modbus, Profibus, ProfiNet, OPC, OPC UA, DeviceNet, HART, Bacnet, KNX, LON, OBIX, Zwave, Zigbee, W-Hart)
- ✓ Detection of "attention" or alarm conditions
- ✓ Data tagging and context awareness
- ✓ Real-time data acquisition and streaming data management on the edge
- ✓ Continuous Queries, Feature Extraction, Data Compression, and more
- ✓ Drag-n-Drop Application development
- ✓ Running on commodity hardware

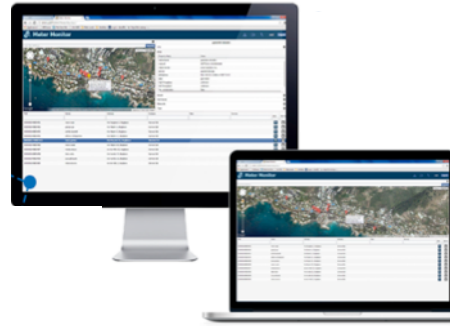


OTHER CONNECTED INDUSTRIES



VIDEO MONITORING

PLAT.ONE provides a full-featured intelligent video analytics solution called Visionell



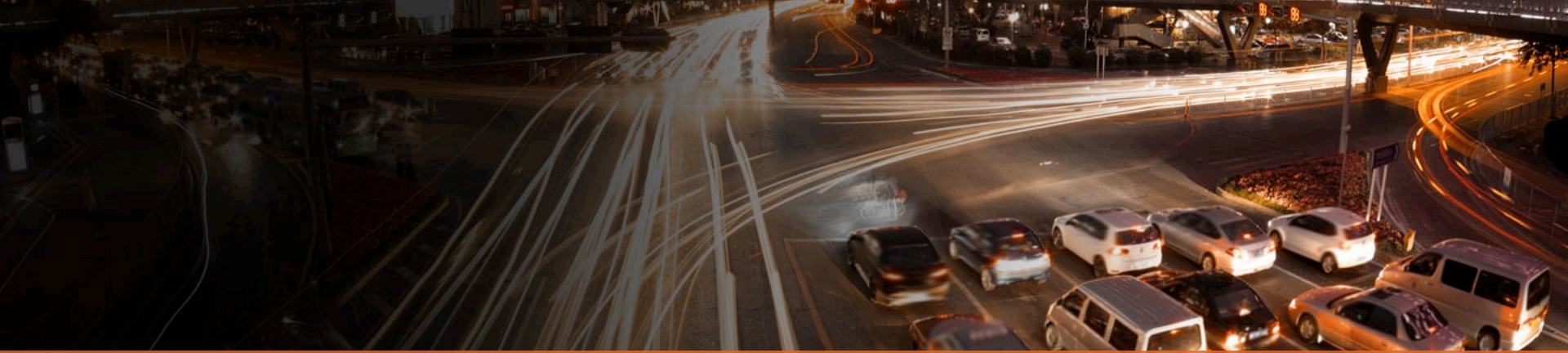
SMART METERS

PLAT.ONE provides a smart metering solution to manage smart energy meters and connect them with enterprise systems



SMART WASTE MANAGEMENT

PLAT.ONE is used as the hub for a city-wide smart waste management solution that provides significant cost savings and improves metrics



THANK YOU

KEN FORSTER
COO

PLAT.ONE | ENTERPRISE
GRADE IOT